

B AC Motors

Reversible Motor 15W(□70mm)

15W

Reversible Motor
15W(□70mm)

Motor Specification

Model		Output W	Voltage V	Frequency Hz	Poles	Duty	Starting Torque		Rated Load			Capacitor μF / VAC	
Lead Wire Type	Terminal Box Type						kgfcm	N.m	Speed r/min	Current A	Torque kgfcm N.m		
7RDGA-15G	7RDGA-15G-T	15	1∅110	60	4	30min.	1.30	0.130	1600	0.46	1.05	0.105	6.0 / 250
7RDGD-15G	7RDGD-15G-T	15	1∅220	60	4	30min.	1.25	0.125	1600	0.23	1.10	0.110	1.5 / 450
7RDGE-15G	7RDGE-15G-T	15	1∅220	50	4	30min.	1.10	0.110	1250	0.17	1.25	0.125	1.2 / 450
			1∅240				1.30	0.130		0.18	1.45	0.145	

- 1) Enter the phase & voltage code in the box (□) within the motor model name.
- 2) All models contain a built-in thermal protector.
- 3) Gear Type Shaft is for attaching Gearbox and D-Cut Type Shaft is for using motor only.

Max. Permissible Torque at Output Shaft of Gearbox

60Hz

Motor Model	Gearbox Model	Gear Ratio r/min	3	3.6	6	7.5	9	12.5	15	18	25	30	36	50	60	75	90	100	120	150	180																			
			kgfcm	N.m	kgfcm	N.m	kgfcm	N.m	kgfcm	N.m	kgfcm	N.m	kgfcm	N.m	kgfcm	N.m	kgfcm	N.m	kgfcm	N.m	kgfcm	N.m	kgfcm	N.m																
7RDG□-15G	7GBK□BMH	600	2.7	0.27	3.3	0.32	5.5	0.54	6.8	0.67	8.2	0.81	11.4	1.12	13.7	1.34	16.4	1.61	20.6	2.02	24.8	2.43	26.9	2.64	37.4	3.67	44.9	4.40	50.0	4.90	50.0	4.90	50.0	4.90	50.0	4.90	50.0	4.90	50.0	4.90

50Hz

Motor Model	Gearbox Model	Gear Ratio r/min	3	3.6	6	7.5	9	12.5	15	18	25	30	36	50	60	75	90	100	120	150	180																					
			kgfcm	N.m	kgfcm	N.m	kgfcm	N.m	kgfcm	N.m	kgfcm	N.m	kgfcm	N.m	kgfcm	N.m	kgfcm	N.m	kgfcm	N.m	kgfcm	N.m	kgfcm	N.m	kgfcm	N.m	kgfcm	N.m	kgfcm	N.m	kgfcm	N.m	kgfcm	N.m	kgfcm	N.m	kgfcm	N.m	kgfcm	N.m	kgfcm	N.m
7RDG□-15G	7GBK□BMH	500	3.1	0.31	3.7	0.37	6.2	0.61	7.8	0.76	9.3	0.92	13.0	1.27	15.6	1.53	18.7	1.83	23.4	2.30	28.1	2.76	30.6	3.00	42.5	4.17	50.0	4.90	50.0	4.90	50.0	4.90	50.0	4.90	50.0	4.90	50.0	4.90	50.0	4.90	50.0	4.90

- 1) Enter the phase & voltage code in the box (□) within the motor model name.
- 2) Enter the gear ratio in the box (□) within the Gearbox model name.
- 3) A colored background indicates gear shaft rotation in the same direction as the motor shaft; a white background indicates rotation in the opposite direction.
- 4) The rotating speed is calculated by dividing the motor's synchronous speed (50Hz: 1,500r/min, 60Hz: 1,800r/min) by the gear ratio. The actual speed is 2~20% less than the displayed value, depending on the size of the load.

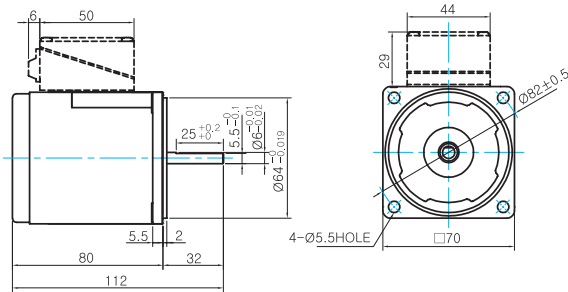
Motor Images



Dimensions

MOTOR ONLY

- MOTOR MODEL: 7RDD□-15(-T) (NO FAN)



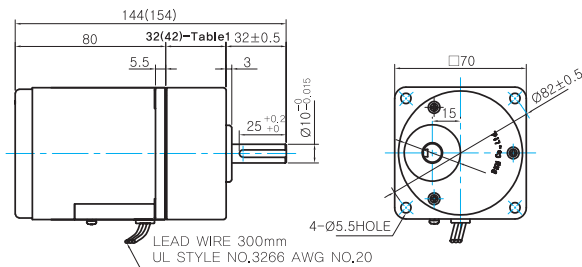
MOTOR OUTPUT SHAFT

MODEL	SPEC
D-CUT TYPE	

GEARED MOTOR

G TYPE GEARBOX

- MOTOR MODEL: 7RDG□-15G (NO FAN)
- GEARBOX MODEL: 7GBK□BMH



GEARBOX OUTPUT SHAFT

MODEL	SPEC
KEY TYPE	

KEY SPEC

GEARBOX	

WEIGHT

PART	WEIGHT(Kg)
MOTOR	1.04
GEAR BOX	7GBK3BMH ~ 7GBK18BMH: 0.36 7GBK25BMH ~ 7GBK30BMH: 0.44 7GBK36MH ~ 7GBK180MH: 0.5

32(42)-Table1

SIZE(mm)	GEAR RATIO
32	7GBK3BMH - 7GBK18BMH
42	7GBK25BMH - 7GBK180BMH

Connection Diagrams

Lead Wire Type	Terminal Box Type						
	<table border="1" style="width: 100%;"> <thead> <tr> <th>Code</th> <th>Contact Capacity</th> </tr> </thead> <tbody> <tr> <td>SW</td> <td>AC125V 5A min. or AC250V 5A min. (Inductive load)</td> </tr> <tr> <td>Ro, Co</td> <td>Ro=5~200Ω Co=0.1~0.2μF, 200WV (400WV)</td> </tr> </tbody> </table> <p>* Connect a CR circuit for surge suppression to protect the contact.</p>	Code	Contact Capacity	SW	AC125V 5A min. or AC250V 5A min. (Inductive load)	Ro, Co	Ro=5~200Ω Co=0.1~0.2μF, 200WV (400WV)
Code	Contact Capacity						
SW	AC125V 5A min. or AC250V 5A min. (Inductive load)						
Ro, Co	Ro=5~200Ω Co=0.1~0.2μF, 200WV (400WV)						

- The direction of motor rotation is as viewed from the shaft end of the motor.
- CW represents the clockwise direction, while CCW represents the counterclockwise direction.
- During operation it is available to change the rotating direction by turning the switch to CW or CCW.